



Mr. Mahendra Patel

+91 96255 79734

+91 93512 64871

PATEL METALS

INDUSTRIAL SUPPLIES



STOCKIST & SUPPLIERS OF :

Stainless Steel, Carbon Steel, Alloy Steel, Sheet, Plate, Pipes, Coil, Circle, Round Bar, Flat Bar Ferrous & Non-Ferrous Metals All Industrial Raw Material Etc.



New Delhi



COMPANY PROFILE



PATEL METALS

INDUSTRIAL SUPPLIES

INTRODUCTION

PATEL METALS, an QMS 9001:2015, EMS 14001:2015, OHSAS 45001:2015, PED (Pressure Equipment Directive), CE (Europe) Certified Company, Manufacturing & Supplying the Finest Quality Material in Alloy 20, SMO 254, Monel, Inconel, Titanium, Hastelloy, Duplex, Super Duplex, Stainless Steel, Carbon Steel, Alloy Steel etc in the Form of Welded, Seamless, EFW, HSAW Spiral Pipes, Tubes, Fittings, Flanges Etc.

Also We Do The Fabrication Job For Our Customers Such As Tube Shell Heat Exchanger, Ring Puddle Pipe, Air Dryer, Tanks And Customized Job As Per Drawing And Customer Requirement.

Immediate Response, Excellent Quality. Quick Delivery And Customer Satisfaction Truly Define **PATEL METALS**, We Also Manufacture And Specialized In Buttweld Fittings, Forged Fittings & Flanges From 15 Nb To 3000 Nb In Nickel, Monel, Inconel, Incoloy, Hastalloy, Alloy 20, Duplex, Super Duplex With En 10204 3.1/3.2 Material Test Certificate & TPI Inspection. Supplying To Various Core Industries Like Refineries & Petrochemicals, Oil & Gas, Chemicals & Fertilizers, Cement, Engineering, Construction, Sugar, Nuclear & Thermal, Paper & Pulp.



Mr. Mahendra Patel

+91 96255 79734 / +91 93512 64871



782, Second Floor, Ward No. VIII,
Daiwara, Kundewalan, Ajmeri Gate,
New Delhi - 110006



patelmetals2025@gmail.com



www.patelmetals.com



Manufacturers,
Stockist & Suppliers



07ABIFP4532FIZA

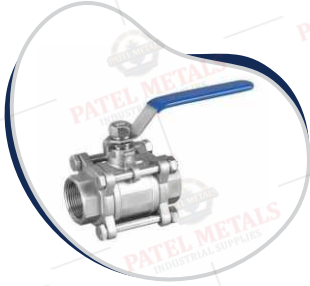
Delhi / India

PAN No. : **ABIFP4532F**





Other Product



S.S. Ball Valve 3 Pcs



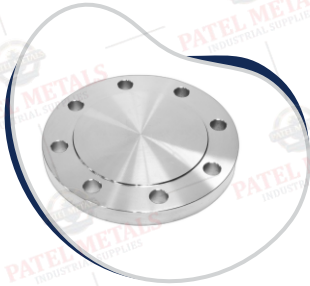
S.S. Ball Valve 2 Pcs



S.S. TC End Ball Valve



S.S. 3 Way Valve



S.S. Flange Blind



S.S. WNRF Flange



S.S. Belo Pipe



S.S. Flange 150#



S.S. Elbow



S.S. Reducer



S.S. Long Coller



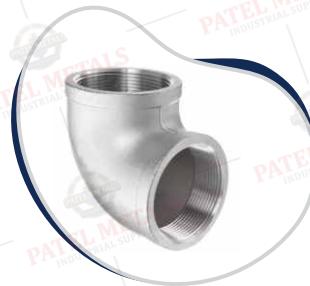
S.S. Sight Glass Valve



S.S. Round Sight Glass



S.S. Hex Nipple



S.S. Elbow IC



S.S. Tee IC



S.S. Reducer IC



Socket Weld Pipe Fittings



S.S. Nut Ferrule Fittings



S.S. Nipple



Other Products



Tanker Valve with SMS Union



U Type Diaphragm Valve



Micro Valve with Union



S.S. Pipe Fitting



Dairy Pipe Holder Imported



In Line Filter with Union



Zero DEAD VALVE



SMS BALL VALVE



Float Valve Imported



TC Clamp



High Pressure Clamp



3 Pin Clamp



Ferrule Blind



TC Ferrule



TC Clamp Full Set



TC Clamp Indian Set



Dairy Pipe Holder



S.S. Flange



Union Ring



TC Gasket



Two Way Valve



90° Bend Plain



TC Bend 90°



Tee Plain



TC Tee



Cross Tee Plain



Buttweld Fitting



Reducer



S.S. Rod



Flange



TC U Bend



TC Reducer



TC Cross



S.S. Man Hole Cover



IC Fitting

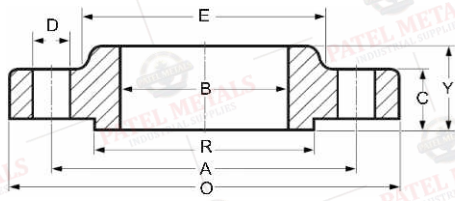


Flanges Dimension

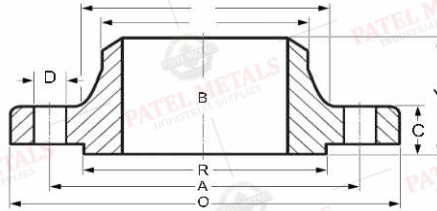


DIMENSION OF FLANGES TO ASME / ANSI B 16.5

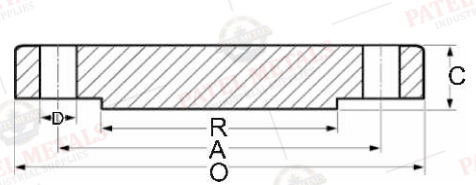
SLIP- ON FLANGE



WELDDING NECK - FLANGE



BLIND - FLANGE



DIMENSION OF CLASS 150 FLANGES AS PER ANSI B 16.5

| Nominal Pipe Size | Flange Dia O | Dia of Bolt Circle A | Dia of Bolt Holes D | No. of Holes | Thickness of Flange C | Dia of Hub E | Length through Hub | | | Dia of Bore | | Dia of R/F | Depth of Socket |
|-------------------|--------------|----------------------|---------------------|--------------|-----------------------|--------------|--------------------|-------|-------|-------------|-------|------------|-----------------|
| | | | | | | | S/O & S/W Y | W/N Y | L/J Y | S/O & S/W B | L/J B | | |
| 15 | 88.9 | 60.3 | 15.9 | 4 | 11.1 | 30.2 | 15.9 | 47.6 | 15.9 | 22.3 | 22.9 | 34.9 | 9.5 |
| 20 | 98.4 | 69.8 | 15.9 | 4 | 12.7 | 38.1 | 15.9 | 52.4 | 15.9 | 27.7 | 28.2 | 42.9 | 11.1 |
| 25 | 107.9 | 79.4 | 15.9 | 4 | 14.3 | 49.2 | 17.5 | 55.6 | 17.5 | 34.5 | 35.0 | 50.8 | 12.7 |
| 32 | 117.5 | 88.9 | 15.9 | 4 | 15.9 | 58.7 | 20.6 | 57.1 | 20.6 | 43.2 | 43.7 | 63.5 | 14.3 |
| 40 | 127.0 | 98.4 | 15.9 | 4 | 17.5 | 65.1 | 22.2 | 61.9 | 22.2 | 49.5 | 50.0 | 73.0 | 15.9 |
| 50 | 152.4 | 120.6 | 19.0 | 4 | 19.0 | 77.8 | 25.4 | 63.5 | 25.4 | 62.0 | 62.5 | 92.1 | 17.5 |
| 65 | 177.8 | 139.7 | 19.0 | 4 | 22.2 | 90.5 | 28.6 | 69.8 | 28.6 | 74.7 | 75.4 | 104.8 | 19.0 |
| 80 | 190.5 | 152.4 | 19.0 | 4 | 23.8 | 107.9 | 30.2 | 69.8 | 30.2 | 90.7 | 91.4 | 127.0 | 20.6 |
| 100 | 228.6 | 190.5 | 19.0 | 8 | 23.8 | 134.9 | 33.3 | 76.2 | 33.3 | 116.1 | 116.8 | 157.2 | 23.8 |
| 125 | 254.0 | 215.9 | 22.2 | 8 | 23.8 | 163.5 | 36.5 | 88.9 | 36.5 | 143.8 | 144.5 | 185.7 | 23.8 |
| 150 | 279.4 | 241.3 | 22.2 | 8 | 25.4 | 192.1 | 39.7 | 88.9 | 39.7 | 170.7 | 171.4 | 215.9 | 27.0 |
| 200 | 342.9 | 298.4 | 22.2 | 8 | 28.6 | 246.1 | 44.4 | 101.6 | 44.4 | 221.5 | 222.2 | 269.9 | 31.7 |
| 250 | 406.4 | 361.9 | 25.4 | 12 | 30.2 | 304.8 | 49.2 | 101.6 | 49.2 | 276.3 | 277.4 | 323.8 | 33.3 |
| 300 | 482.6 | 431.8 | 25.4 | 12 | 31.8 | 365.4 | 55.6 | 114.3 | 55.6 | 327.1 | 328.2 | 381.0 | 39.7 |
| 350 | 533.4 | 476.2 | 28.6 | 12 | 34.9 | 400.0 | 57.1 | 127.0 | 79.4 | 359.1 | 360.2 | 412.7 | 41.3 |
| 400 | 596.9 | 539.7 | 28.6 | 16 | 36.5 | 457.2 | 63.5 | 127.0 | 87.3 | 410.5 | 411.2 | 469.9 | 44.4 |
| 450 | 635.0 | 577.8 | 31.6 | 16 | 39.7 | 504.8 | 68.3 | 139.7 | 96.8 | 461.8 | 462.3 | 533.4 | 49.2 |
| 500 | 698.5 | 635.0 | 31.6 | 20 | 42.9 | 558.8 | 73.0 | 144.5 | 103.2 | 513.1 | 514.3 | 584.2 | 54.0 |
| 600 | 812.8 | 749.3 | 34.9 | 20 | 47.6 | 663.6 | 82.5 | 152.4 | 111.1 | 615.9 | 615.9 | 692.1 | 63.5 |

DIMENSION OF CLASS 300 FLANGES AS PER ANSI B 16.5

| Nominal Pipe Size | Flange Dia O | Dia of Bolt Circle A | Dia of Bolt Holes D | No. of Holes | Thickness of Flange C | Dia of Hub E | Length through Hub | | | Dia of Bore | | Dia of R/F | Depth of Socket |
|-------------------|--------------|----------------------|---------------------|--------------|-----------------------|--------------|--------------------|-------|-------|-------------|-------|------------|-----------------|
| | | | | | | | S/O & S/W Y | W/N Y | L/J Y | S/O & S/W B | L/J B | | |
| 15 | 95.2 | 66.7 | 15.9 | 4 | 14.3 | 38.1 | 22.2 | 52.4 | 22.2 | 22.3 | 22.9 | 34.9 | 9.5 |
| 20 | 117.5 | 82.5 | 19.0 | 4 | 15.9 | 47.6 | 25.4 | 57.1 | 25.4 | 27.7 | 28.2 | 42.9 | 11.1 |
| 25 | 123.8 | 88.9 | 19.0 | 4 | 17.5 | 54.0 | 27.0 | 61.9 | 27.0 | 34.5 | 35.0 | 50.8 | 12.7 |
| 32 | 133.3 | 98.4 | 19.0 | 4 | 19.0 | 63.5 | 27.0 | 65.1 | 27.0 | 43.2 | 43.7 | 63.5 | 14.3 |
| 40 | 155.6 | 114.3 | 22.2 | 4 | 20.6 | 69.8 | 30.2 | 68.3 | 30.2 | 49.5 | 50.0 | 73.0 | 15.9 |
| 50 | 165.1 | 127.0 | 19.0 | 8 | 22.2 | 84.1 | 33.3 | 69.8 | 33.3 | 62.0 | 62.5 | 92.1 | 17.5 |
| 65 | 190.5 | 149.2 | 22.2 | 8 | 25.4 | 100.0 | 38.1 | 76.2 | 38.1 | 74.7 | 75.4 | 104.8 | 19.0 |
| 80 | 209.5 | 168.3 | 22.2 | 8 | 28.6 | 117.5 | 42.9 | 79.4 | 42.9 | 90.7 | 91.4 | 127.0 | 20.6 |
| 100 | 254.0 | 200.0 | 22.2 | 8 | 31.8 | 146.0 | 47.6 | 85.7 | 47.6 | 116.1 | 116.8 | 157.2 | 23.8 |
| 125 | 279.4 | 234.9 | 22.2 | 8 | 34.9 | 177.8 | 50.8 | 98.4 | 50.8 | 143.8 | 144.5 | 185.7 | - |
| 150 | 317.5 | 269.9 | 22.2 | 12 | 36.5 | 206.4 | 52.4 | 98.4 | 52.4 | 170.7 | 171.4 | 215.9 | - |
| 200 | 381.0 | 330.2 | 25.4 | 12 | 41.3 | 260.3 | 61.9 | 111.1 | 61.9 | 211.5 | 222.2 | 269.9 | - |
| 250 | 444.5 | 387.3 | 28.6 | 16 | 47.6 | 320.7 | 66.7 | 117.5 | 95.2 | 276.3 | 277.4 | 323.8 | - |
| 300 | 520.7 | 450.8 | 31.7 | 16 | 50.8 | 374.6 | 73.0 | 130.2 | 101.6 | 327.1 | 328.2 | 381.0 | - |
| 350 | 584.2 | 514.3 | 31.7 | 20 | 54.0 | 425.4 | 76.2 | 142.9 | 111.1 | 359.1 | 360.2 | 412.7 | - |
| 400 | 647.7 | 571.5 | 34.9 | 20 | 57.2 | 482.6 | 82.5 | 146.0 | 120.6 | 410.5 | 411.2 | 469.9 | - |
| 450 | 711.2 | 628.5 | 34.9 | 24 | 60.3 | 533.4 | 88.9 | 158.7 | 130.2 | 461.8 | 462.3 | 533.4 | - |
| 500 | 774.7 | 685.8 | 34.9 | 24 | 63.5 | 587.4 | 95.2 | 161.9 | 139.7 | 513.1 | 514.3 | 584.2 | - |
| 600 | 914.4 | 812.8 | 41.3 | 24 | 69.8 | 701.7 | 106.4 | 168.3 | 152.4 | 615.9 | 615.9 | 692.1 | - |

1) All dimension are in Millimeters.

2) Flanges except Lap Joint will be furnished with (1.6) Raised Face, which is included in "Thickness © " and" Length through Hub (Y)"



Pipe Flanges Dimension

DIMENSION OF PIPE FLANGES AS PER TABLE BS-10

Table D : For Working Steam Pressure upto 50 lbs per sq. inch

| Nominal Pipe size | O.D. of Pipe | Dia. of Flange | Dia. of Bolt Circle | No. of Bolt | Dia. of Bolt | Thickness |
|-------------------|--------------|----------------|---------------------|-------------|--------------|-----------|
| 1/2" | 21.3 | 95.3 | 66.7 | 4 | 12.7 | 4.8 |
| 3/4" | 26.7 | 101.6 | 73.0 | 4 | 12.7 | 4.8 |
| 1" | 33.4 | 114.3 | 82.6 | 4 | 12.7 | 4.8 |
| 1 1/4" | 42.2 | 120.7 | 87.6 | 4 | 12.7 | 6.4 |
| 1 1/2" | 48.3 | 133.4 | 98.4 | 4 | 12.7 | 6.4 |
| 2" | 60.3 | 152.4 | 114.3 | 4 | 15.9 | 7.9 |
| 2 1/2" | 73.0 | 165.1 | 127.0 | 4 | 15.9 | 7.9 |
| 3" | 88.9 | 184.2 | 146.1 | 4 | 15.9 | 9.5 |
| 3 1/2" | 101.6 | 203.2 | 165.1 | 4 | 15.9 | 9.5 |
| 4" | 114.3 | 215.9 | 177.8 | 4 | 15.9 | 9.5 |
| 5" | 141.3 | 254.0 | 209.6 | 8 | 15.9 | 12.7 |
| 6" | 168.3 | 279.4 | 228.6 | 8 | 15.9 | 12.7 |
| 7" | 190.5 | 304.8 | 260.4 | 8 | 15.9 | 12.7 |
| 8" | 219.1 | 336.6 | 292.1 | 8 | 15.9 | 12.7 |
| 9" | 244.5 | 368.3 | 323.9 | 8 | 15.9 | 15.9 |
| 10" | 273.3 | 406.4 | 355.6 | 8 | 19.1 | 15.9 |
| 12" | 323.9 | 547.2 | 406.4 | 12 | 19.1 | 15.9 |
| 14" | 355.6 | 527.1 | 469.9 | 12 | 22.2 | 19.1 |
| 16" | 406.4 | 577.9 | 520.7 | 12 | 22.2 | 19.1 |
| 18" | 457.2 | 641.4 | 584.2 | 12 | 22.2 | 22.2 |
| 20" | 508.0 | 704.9 | 641.4 | 16 | 22.5 | 25.4 |
| 24" | 609.6 | 825.5 | 755.7 | 16 | 25.4 | 28.6 |

Table E : For Working Steam Pressure upto 50 lbs per sq. inch

| Nominal Pipe size | Dia. of Flange | Dia. of Bolt Circle | No. of Bolt | Dia. of Bolt | Thickness |
|-------------------|----------------|---------------------|-------------|--------------|-----------|
| 1/2" | 95.3 | 66.7 | 4 | 12.7 | 6.4 |
| 3/4" | 101.6 | 73.0 | 4 | 12.7 | 6.4 |
| 1" | 114.3 | 82.6 | 4 | 12.7 | 7.1 |
| 1 1/4" | 120.7 | 87.6 | 4 | 12.7 | 7.9 |
| 1 1/2" | 133.4 | 98.4 | 4 | 12.7 | 8.7 |
| 2" | 152.4 | 114.3 | 4 | 15.9 | 9.5 |
| 2 1/2" | 165.1 | 127.0 | 4 | 15.9 | 10.3 |
| 3" | 184.2 | 146.1 | 4 | 15.9 | 11.1 |
| 3 1/2" | 203.2 | 165.1 | 8 | 15.9 | 11.9 |
| 4" | 215.9 | 177.8 | 8 | 15.9 | 12.7 |
| 5" | 254.0 | 209.6 | 8 | 15.9 | 14.3 |
| 6" | 279.4 | 228.6 | 8 | 19.1 | 17.5 |
| 7" | 304.8 | 260.4 | 8 | 19.1 | 19.1 |
| 8" | 336.6 | 292.1 | 8 | 19.1 | 19.1 |
| 9" | 368.3 | 323.9 | 12 | 19.1 | 20.6 |
| 10" | 406.4 | 355.6 | 12 | 19.1 | 22.2 |
| 12" | 457.2 | 406.4 | 12 | 22.2 | 25.4 |
| 14" | 527.2 | 469.9 | 12 | 22.2 | 25.4 |
| 16" | 577.9 | 520.7 | 12 | 22.2 | 25.4 |
| 18" | 641.4 | 584.2 | 16 | 22.2 | 28.6 |
| 20" | 704.9 | 641.4 | 16 | 22.2 | 31.8 |
| 24" | 825.5 | 755.7 | 16 | 25.4 | 38.1 |

Table F : For Working Steam Pressure upto 50 lbs per sq. inch

| Nominal Pipe size | O.D. of Pipe | Dia. of Flange | Dia. of Bolt Circle | No. of Bolt | Dia. of Bolt | Thickness |
|-------------------|--------------|----------------|---------------------|-------------|--------------|-----------|
| 1/2" | 21.3 | 95.3 | 66.7 | 4 | 12.7 | 9.5 |
| 3/4" | 26.7 | 101.6 | 73.0 | 4 | 12.7 | 9.5 |
| 1" | 33.4 | 120.7 | 87.6 | 4 | 15.9 | 9.5 |
| 1 1/4" | 42.2 | 133.4 | 98.4 | 4 | 15.9 | 12.7 |
| 1 1/2" | 48.3 | 139.7 | 114.3 | 4 | 15.9 | 12.7 |
| 2" | 60.3 | 165.1 | 127.0 | 4 | 15.9 | 15.9 |
| 2 1/2" | 73.0 | 184.2 | 146.1 | 8 | 15.9 | 15.9 |
| 3" | 88.9 | 203.2 | 165.1 | 8 | 15.9 | 15.9 |
| 3 1/2" | 101.6 | 215.9 | 177.8 | 8 | 15.9 | 19.1 |
| 4" | 114.3 | 228.6 | 190.5 | 8 | 15.9 | 19.1 |
| 5" | 141.3 | 279.4 | 235.0 | 8 | 19.1 | 22.2 |
| 6" | 168.3 | 304.8 | 260.4 | 12 | 19.1 | 22.2 |
| 7" | 190.5 | 336.6 | 292.1 | 12 | 19.1 | 22 |
| 8" | 219.1 | 368.3 | 323.9 | 12 | 19.1 | 25.4 |
| 9" | 244.5 | 406.4 | 355.6 | 12 | 22.2 | 25.4 |
| 10" | 273.3 | 431.8 | 381.0 | 12 | 22.2 | 25.4 |
| 12" | 323.9 | 489.0 | 438.2 | 16 | 22.2 | 28.6 |
| 14" | 355.6 | 552.5 | 495.3 | 16 | 25.4 | 31.8 |
| 16" | 406.4 | 609.6 | 552.5 | 20 | 25.4 | 31.8 |
| 18" | 457.2 | 673.1 | 609.6 | 20 | 28.6 | 34.9 |
| 20" | 508.0 | 736.6 | 673.1 | 24 | 28.6 | 38.1 |
| 24" | 609.6 | 850.9 | 781.1 | 24 | 31.8 | 41.3 |

Table H : For Working Steam Pressure upto 50 lbs per sq. inch

| Nominal Pipe size | Dia. of Flange | Dia. of Bolt Circle | No. of Bolt | Dia. of Bolt | Thickness |
|-------------------|----------------|---------------------|-------------|--------------|-----------|
| 1/2" | 114.3 | 82.6 | 4 | 15.9 | 12.7 |
| 3/4" | 114.6 | 82.6 | 4 | 15.9 | 12.7 |
| 1" | 120.78 | 87.3 | 4 | 15.9 | 14.3 |
| 1 1/4" | 133.4 | 98.4 | 4 | 15.9 | 17.5 |
| 1 1/2" | 139.7 | 104.8 | 4 | 15.9 | 17.5 |
| 2" | 165.1 | 127.0 | 4 | 15.9 | 19.1 |
| 2 1/2" | 184.2 | 146.1 | 8 | 15.9 | 19.1 |
| 3" | 203.2 | 165.1 | 8 | 15.9 | 22.2 |
| 3 1/2" | 215.9 | 177.8 | 8 | 15.9 | 22.2 |
| 4" | 228.6 | 190. | 8 | 15.9 | 25.4 |
| 5" | 279.4 | 235.0 | 8 | 19.1 | 28.6 |
| 6" | 304.8 | 260.4 | 12 | 19.1 | 28.6 |
| 7" | 336.6 | 292.1 | 12 | 19.1 | 31.8 |
| 8" | 368.3 | 323.9 | 12 | 19.1 | 31.8 |
| 9" | 406.4 | 355.6 | 12 | 22.2 | 34.9 |
| 10" | 431.8 | 381.0 | 12 | 22.2 | 34.9 |
| 12" | 489.0 | 438.2 | 16 | 22.2 | 38.1 |
| 14" | 552.5 | 495.3 | 16 | 25.4 | 41.3 |
| 16" | 609.6 | 552.5 | 20 | 25.4 | 44.5 |
| 18" | 673.1 | 609.6 | 20 | 28.6 | 47.6 |
| 20" | 736.6 | 673.1 | 24 | 28.6 | 50.8 |
| 24" | 850.9 | 781.1 | 25 | 31.8 | 57.2 |



STAINLESS STEEL PIPE DIMENSION & WEIGHT-KG. PER MTR. (ANSI B36.19)

| Nominal Pipe Size | | Outside Diameter | Schedule 5 S | | Schedule 10 S | | Schedule 20 S | | Schedule 40 S | | Schedule 80 S | | Schedule 160 S | | Schedule XXS | |
|-------------------|-------|------------------|--------------|----------------|---------------|----------------|---------------|----------------|---------------|----------------|---------------|----------------|----------------|----------------|--------------|----------------|
| mm | Inch | mm | Wt mm | Weight (kg/mt) | Wt mm | Weight (kg/mt) | Wt mm | Weight (kg/mt) | Wt mm | Weight (kg/mt) | Wt mm | Weight (kg/mt) | Wt mm | Weight (kg/mt) | Wt mm | Weight (kg/mt) |
| 3 | 1/8 | 10.3 | 1.24 | 0.276 | 1.24 | 0.28 | 1.5 | 0.33 | 1.73 | 0.37 | 2.41 | 0.47 | - | - | - | - |
| 6 | 1/4 | 13.7 | 1.24 | 0.390 | 1.65 | 0.49 | 2.00 | 0.58 | 2.24 | 0.630 | 3.02 | 0.80 | - | - | - | - |
| 10 | 3/8 | 17.1 | 1.24 | 0.490 | 1.65 | 0.63 | 2.00 | 0.74 | 2.31 | 0.840 | 3.20 | 1.10 | - | - | - | - |
| 15 | 1/2 | 21.3 | 1.65 | 0.800 | 2.11 | 1.00 | 2.30 | 1.07 | 2.77 | 1.27 | 3.73 | 1.62 | 4.75 | 1.94 | 7.47 | 2.55 |
| 20 | 3/4 | 26.7 | 1.65 | 1.03 | 2.11 | 1.28 | 2.55 | 1.52 | 2.87 | 1.69 | 3.91 | 2.20 | 5.56 | 2.90 | 7.82 | 3.64 |
| 25 | 1 | 33.4 | 1.65 | 1.30 | 2.77 | 2.09 | 2.55 | 1.94 | 3.38 | 2.50 | 4.55 | 3.24 | 6.35 | 4.24 | 9.09 | 5.45 |
| 32 | 1.1/4 | 42.2 | 1.65 | 1.65 | 2.77 | 2.70 | 3.00 | 2.90 | 3.56 | 3.39 | 4.85 | 4.47 | 6.35 | 5.61 | 9.70 | 7.77 |
| 40 | 1.1/2 | 48.3 | 1.65 | 1.91 | 2.77 | 3.11 | 3.00 | 3.55 | 3.68 | 4.05 | 5.08 | 5.41 | 7.14 | 7.25 | 11.1 | 10.18 |
| 50 | 2 | 60.3 | 1.65 | 2.40 | 2.77 | 3.93 | 3.00 | 4.24 | 3.91 | 5.44 | 5.54 | 7.48 | 8.74 | 11.11 | 11.07 | 13.44 |
| 65 | 2.1/2 | 73.0 | 2.11 | 3.69 | 3.05 | 5.26 | 4.00 | 6.81 | 5.16 | 8.63 | 7.01 | 11.41 | 9.53 | 14.91 | 14.02 | 20.39 |
| 80 | 3 | 88.9 | 2.11 | 4.51 | 3.05 | 6.45 | 4.00 | 8.37 | 5.49 | 11.29 | 7.62 | 15.27 | 11.1 | 21.30 | 15.24 | 27.68 |
| 100 | 4 | 114.3 | 2.11 | 5.84 | 3.05 | 8.36 | 4.50 | 12.18 | 6.02 | 16.07 | 8.56 | 22.32 | 13.49 | 33.54 | 17.12 | 41.03 |
| 125 | 5 | 141.3 | 2.77 | 9.47 | 3.40 | 11.57 | 5.00 | 16.80 | 6.55 | 21.8 | 9.53 | 30.97 | 15.88 | 49.11 | 19.05 | 57.43 |
| 150 | 6 | 168.3 | 2.77 | 11.32 | 3.40 | 13.84 | 6.35 | 25.36 | 7.11 | 28.26 | 10.97 | 42.56 | 18.25 | 67.53 | 21.95 | 79.22 |
| 200 | 8 | 219.1 | 2.77 | 14.79 | 3.76 | 19.96 | 6.35 | 33.31 | 8.18 | 42.55 | 12.7 | 64.64 | 23.01 | 111.27 | 22.23 | 107.92 |
| 250 | 10 | 273.1 | 3.40 | 22.63 | 4.19 | 27.78 | 6.35 | 41.77 | 9.27 | 60.31 | 12.7 | 96.01 | 28.58 | 172.33 | 25.40 | 155.15 |
| 300 | 12 | 323.8 | 3.96 | 31.25 | 4.57 | 36.00 | 6.35 | 49.7 | 9.53 | 73.88 | 12.7 | 132.05 | 33.32 | 238.76 | 25.40 | 186.97 |
| 350 | 14 | 355.6 | 3.96 | 34.36 | 4.78 | 41.3 | 7.92 | 67.80 | 11.13 | 94.59 | | | | | | |
| 400 | 16 | 406.4 | 4.19 | 41.56 | 4.78 | 47.29 | 7.92 | 77.83 | 12.7 | 123.30 | | | | | | |
| 450 | 18 | 457.2 | 4.19 | 46.81 | 4.78 | 53.26 | 7.92 | 87.71 | 14.27 | 155.80 | | | | | | |
| 500 | 20 | 508.0 | 4.78 | 59.25 | 5.54 | 68.61 | 9.53 | 117.14 | 15.09 | 183.42 | | | | | | |
| 600 | 24 | 609.6 | 5.54 | 82.47 | 6.35 | 94.45 | 9.53 | 141.12 | 17.48 | 255.41 | | | | | | |

CARBON STEEL SEAMLESS PIPE DIMENSION & WEIGHT-KG. PER MTR. (ANSI B 36.10)

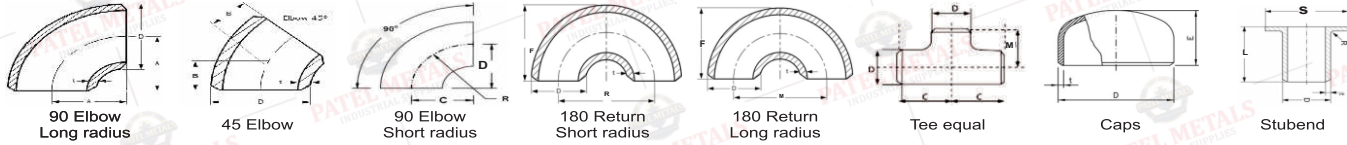
| Nominal Pipe Size | | O/D | Schedule 10 | | Schedule 20 | | Schedule 30 | | Schedule STD | | Schedule 40 | | Schedule 60 | | Schedule Extra Strong (XS) | | Schedule 80 | | Schedule 100 | | Schedule 120 | | Schedule 140 | | Schedule 160 | | Schedule Double Extra Strong (XXS) | | |
|-------------------|-------|-------|-------------|-------|-------------|-------|-------------|--------|--------------|-------|-------------|-------|-------------|-------|----------------------------|-------|-------------|--------|--------------|-------|--------------|-------|--------------|--------|--------------|--------|------------------------------------|-------|------|
| mm | inch | mm | mm | kg/mt | mm | kg/mt | mm | kg/mt | Wall | Wt. | Wall | Wt. | Wall | Wt. | Wall | Wt. | Wall | Wt. | Wall | Wt. | Wall | Wt. | Wall | Wt. | Wall | Wt. | Wall | Wt. | |
| 3 | 1/8 | 10.3 | - | - | - | - | - | - | 1.73 | 0.37 | 1.73 | 0.37 | - | - | 2.41 | 0.47 | 2.41 | 0.47 | - | - | - | - | - | - | - | - | - | - | |
| 6 | 1/4 | 13.7 | - | - | - | - | - | - | 2.24 | 0.63 | 2.24 | 0.63 | - | - | 3.02 | 0.80 | 3.02 | 0.80 | - | - | - | - | - | - | - | - | - | - | |
| 10 | 3/8 | 17.7 | - | - | - | - | - | - | 2.31 | 0.84 | 2.31 | 0.84 | - | - | 3.20 | 1.10 | 3.20 | 1.10 | - | - | - | - | - | - | - | - | - | - | |
| 15 | 1/2 | 21.3 | - | - | - | - | - | - | 2.77 | 1.27 | 2.77 | 1.27 | - | - | 3.73 | 1.62 | 3.73 | 1.62 | - | - | - | - | - | - | - | 4.78 | 1.95 | 7.5 | 2.55 |
| 20 | 3/4 | 26.7 | - | - | - | - | - | - | 2.87 | 1.69 | 2.87 | 1.69 | - | - | 3.91 | 2.20 | 3.91 | 2.20 | - | - | - | - | - | - | - | 5.6 | 2.90 | 7.82 | 3.64 |
| 25 | 1 | 33.4 | - | - | - | - | - | - | 3.38 | 2.50 | 3.38 | 2.50 | - | - | 4.55 | 3.24 | 4.55 | 3.24 | - | - | - | - | - | - | 6.35 | 4.24 | 9.1 | 5.45 | |
| 32 | 1.1/4 | 42.2 | - | - | - | - | - | - | 3.56 | 3.39 | 3.56 | 3.39 | - | - | 4.85 | 4.47 | 4.85 | 4.47 | - | - | - | - | - | - | 6.35 | 5.61 | 9.7 | 7.77 | |
| 40 | 1.1/2 | 48.3 | - | - | - | - | - | - | 3.68 | 4.05 | 3.68 | 4.05 | - | - | 5.08 | 5.41 | 5.08 | 5.41 | - | - | - | - | - | - | 7.14 | 7.25 | 10.2 | 9.56 | |
| 50 | 2 | 60.3 | - | - | - | - | - | - | 3.91 | 5.44 | 3.91 | 5.44 | - | - | 5.54 | 7.48 | 5.54 | 7.48 | - | - | - | - | - | - | 8.74 | 11.11 | 11.07 | 13.4 | |
| 65 | 2.1/2 | 73.0 | - | - | - | - | - | - | 5.16 | 8.63 | 5.16 | 8.63 | - | - | 7.01 | 11.41 | 7.01 | 11.41 | - | - | - | - | - | - | 9.53 | 14.92 | 14.0 | 20.4 | |
| 80 | 3 | 88.9 | - | - | - | - | - | - | 5.49 | 11.3 | 5.49 | 11.3 | - | - | 7.62 | 15.27 | 7.62 | 15.3 | - | - | - | - | - | - | 11.13 | 21.35 | 15.24 | 27.7 | |
| 90 | 3.1/2 | 101.6 | - | - | - | - | - | - | 5.74 | 13.57 | 5.74 | 13.57 | - | - | 8.08 | 18.63 | 8.08 | 18.63 | - | - | - | - | - | - | - | - | 16.2 | 34.1 | |
| 100 | 4 | 114.3 | - | - | - | - | - | - | 6.02 | 16.07 | 6.02 | 16.07 | - | - | 8.56 | 22.3 | 8.56 | 22.3 | - | - | 11.13 | 28.32 | - | - | 13.5 | 33.5 | 17.12 | 41.03 | |
| 125 | 5 | 141.3 | - | - | - | - | - | - | 6.55 | 21.77 | 6.55 | 21.77 | - | - | 9.53 | 30.9 | 9.53 | 30.9 | - | - | 12.7 | 40.2 | - | - | 15.9 | 49.11 | 19.0 | 57.4 | |
| 150 | 6 | 168.3 | - | - | - | - | - | - | 7.11 | 28.26 | 7.11 | 28.26 | - | - | 10.97 | 42.5 | 10.97 | 42.5 | - | - | 14.3 | 54.2 | - | - | 18.3 | 67.5 | 21.95 | 79.22 | |
| 200 | 8 | 219.1 | - | - | 6.35 | 33.3 | 7.0 | 36.8 | 8.18 | 42.5 | 8.18 | 42.55 | 10.31 | 53.10 | 12.7 | 64.6 | 12.7 | 64.5 | 15.1 | 75.92 | 18.3 | 90.4 | 20.6 | 100.9 | 23.0 | 111.27 | 22.23 | 108.0 | |
| 250 | 10 | 273.0 | - | - | 6.35 | 41.7 | 7.8 | 51.3 | 9.27 | 60.3 | 9.27 | 60.31 | 12.70 | 81.50 | 12.7 | 81.5 | 15.7 | 96.0 | 18.3 | 114.7 | 21.44 | 133.0 | 25.4 | 155 | 28.6 | 172.3 | 25.4 | 155.0 | |
| 300 | 12 | 323.9 | - | - | 6.35 | 49.7 | 8.4 | 65.2 | 9.53 | 73.8 | 10.31 | 79.73 | 14.30 | 109.0 | 12.7 | 97.4 | 17.5 | 132.0 | 21.4 | 160.0 | 25.4 | 187.0 | 28.6 | 208 | 33.3 | 238.7 | 25.4 | 187.0 | |
| 350 | 14 | 355.6 | 6.35 | 54.6 | 7.92 | 67.9 | 9.53 | 81.3 | 9.53 | 81.3 | 11.13 | 94.55 | 15.10 | 126.4 | 12.7 | 107.4 | 19.0 | 158.0 | 23.8 | 195.0 | 27.8 | 224.0 | 31.8 | 253.5 | 35.7 | 281.7 | - | - | |
| 400 | 16 | 406.4 | 6.35 | 62.6 | 7.92 | 77.9 | 9.53 | 93.3 | 9.53 | 93.3 | 12.7 | 123.3 | 16.70 | 160.0 | 12.7 | 123.3 | 21.44 | 203.5 | 26.2 | 245.5 | 30.9 | 286.6 | 36.53 | 333 | 40.5 | 365.4 | - | - | |
| 450 | 18 | 457.0 | 6.35 | 70.5 | 7.92 | 87.7 | 11.13 | 122.4 | 9.53 | 105.0 | 14.27 | 156.0 | 19.05 | 206.0 | 12.7 | 139.0 | 23.8 | 254.6 | 29.36 | 309.6 | 34.9 | 363.6 | 39.7 | 408.3 | 45.2 | 459.4 | - | - | |
| 500 | 20 | 508.0 | 6.35 | 78.5 | 9.53 | 117.2 | 12.7 | 155.1 | 9.53 | 117.2 | 15.09 | 183.4 | 20.62 | 248.5 | 12.7 | 155.1 | 26.2 | 311.2 | 32.54 | 381.5 | 38.1 | 441.5 | 44.4 | 508 | 50.0 | 564.8 | - | - | |
| 550 | 22 | 559.0 | 6.35 | 86.5 | 9.53 | 129.0 | 12.7 | 171.0 | 9.53 | 129.0 | - | - | 22.20 | 294.0 | 12.7 | 171.0 | 28.6 | 373.8 | 34.9 | 451.4 | 41.3 | 527.0 | 47.6 | 600 | 54.0 | 672.0 | - | - | |
| 600 | 24 | 610.0 | 6.35 | 94.5 | 9.53 | 141.0 | 14.3 | 209.7 | 9.53 | 141.0 | 17.48 | 255.4 | 24.61 | 355.0 | 12.7 | 187.0 | 30.96 | 442.08 | 38.89 | 547.7 | 46.0 | 640.0 | 52.4 | 720.15 | 59.5 | 808.22 | - | - | |
| 650 | 26 | 660.0 | 7.92 | 127.0 | 12.7 | 203.0 | - | - | 9.53 | 153.0 | - | - | - | - | 12.7 | 202.7 | | | | | | | | | | | | | |
| 700 | 28 | 711.0 | 7.92 | 137.4 | 12.7 | 218.7 | 15.88 | 271.2 | 9.53 | 165.0 | - | - | - | - | 12.7 | 218.7 | | | | | | | | | | | | | |
| 750 | 30 | 762.0 | 7.92 | 147.3 | 12.7 | 234.6 | 15.88 | 292.18 | 9.53 | 176.8 | - | - | - | - | 12.7 | 234.7 | | | | | | | | | | | | | |
| 800 | 32 | 813.0 | 7.92 | 157.0 | 12.7 | 250.6 | 15.88 | 312.0 | 9.53 | 188.2 | 17.48 | 342.9 | - | - | 12.7 | 250.6 | | | | | | | | | | | | | |
| 850 | 34 | 864.0 | 7.92 | 167.0 | 12.7 | 266.6 | 15.88 | 332.1 | 9.53 | 200.3 | 17.48 | 364.9 | - | - | 12.7 | 366.6 | | | | | | | | | | | | | |
| 900 | 36 | 914.4 | 7.92 | 179.9 | 12.7 | 282.3 | 15.88 | 351.7 | 9.53 | 212.5 | 19.05 | 420.4 | - | - | 12.7 | 282.2 | | | | | | | | | | | | | |



Butt Weld Pipe Dimension



BUTT WELDING PIPE FITTING DIMENSION STANDARD ANSI B-16.9, B16.28 & MS SS P43



| Nominal Pipe Size | | Outside Diameter | Centre to Face | | | Back to Face | | | Centre to Centre | | | | Lenth "L" MSSSP43 B16.9 | |
|-------------------|------|------------------|----------------|-------|-------|--------------|-------|--------|------------------|--------|--------|--------|-------------------------|-------|
| Inch | mm | D | A | B | C | N | E | F | G | R | M | S | L | L |
| 1/2 | 15 | 21.3 | 38.00 | 16.0 | 25.0 | - | 25.0 | 48.0 | - | 76.0 | - | 35.0 | 50.8 | 76.2 |
| 3/4 | 20 | 26.7 | 29.00 | 11.0 | 29.0 | - | 25.0 | 43.0 | - | 57.0 | - | 43.0 | 50.8 | 76.2 |
| 1 | 25 | 33.4 | 38.00 | 22.0 | 38.0 | 25.0 | 38.0 | 56.0 | 41.0 | 76.0 | 51.0 | 51.0 | 50.8 | 101.6 |
| 1 1/4 | 32 | 42.2 | 48.00 | 25.0 | 48.0 | 32.0 | 38.0 | 70.0 | 52.0 | 95.0 | 64.0 | 64.0 | 50.8 | 101.6 |
| 1 1/2 | 40 | 48.3 | 57.15 | 29.0 | 57.0 | 38.0 | 38.0 | 83.0 | 62.0 | 114.0 | 76.0 | 73.0 | 50.8 | 101.6 |
| 2 | 50 | 60.3 | 76.00 | 35.0 | 64.0 | 51.0 | 38.0 | 106.0 | 81.0 | 152.0 | 102.0 | 93.0 | 63.5 | 152.4 |
| 2 1/2 | 65 | 73.0 | 95.25 | 44.0 | 76.0 | 65.0 | 38.0 | 132.0 | 100.0 | 191.0 | 127.0 | 105.0 | 63.5 | 152.4 |
| 3 | 80 | 88.9 | 114.30 | 51.0 | 86.0 | 76.0 | 51.0 | 159.0 | 121.0 | 229.0 | 152.0 | 127.0 | 63.5 | 152.4 |
| 3 1/2 | 90 | 101.6 | 133.35 | 57.0 | 95.0 | 89.0 | 65.4 | 184.0 | 140.0 | 267.0 | 178.0 | 140.0 | 76.2 | 152.4 |
| 4 | 100 | 114.3 | 152.0 | 63.0 | 105.0 | 102.0 | 64.0 | 210.0 | 159.0 | 305.0 | 203.0 | 157.0 | 76.2 | 152.4 |
| 5 | 125 | 141.3 | 190.0 | 79.0 | 123.0 | 127.0 | 76.0 | 262.0 | 197.0 | 381.0 | 254.0 | 186.0 | 76.2 | 203.2 |
| 6 | 150 | 168.3 | 229.0 | 95.0 | 143.0 | 152.0 | 89.0 | 313.0 | 237.0 | 457.0 | 305.0 | 216.0 | 88.9 | 203.2 |
| 8 | 200 | 219.1 | 305.0 | 127.0 | 178.0 | 203.0 | 102.0 | 414.0 | 313.0 | 610.0 | 406.0 | 270.0 | 101.6 | 203.2 |
| 10 | 250 | 273.1 | 381.0 | 159.0 | 216.0 | 254.0 | 127.0 | 515.0 | 391.0 | 760.0 | 508.0 | 324.0 | 127.0 | 254 |
| 12 | 300 | 323.9 | 457.0 | 190.0 | 254.0 | 303.0 | 152.0 | 619.0 | 467.0 | 914.0 | 610.0 | 381.0 | 152.4 | 254 |
| 14 | 350 | 355.6 | 533.0 | 222.0 | 279.0 | 356.0 | 165.0 | 711.0 | 533.0 | 1067.0 | 711.0 | 413.0 | 152.4 | 305.0 |
| 16 | 400 | 406.4 | 610.0 | 254.0 | 305.0 | 406.0 | 178.0 | 813.0 | 610.0 | 1219.0 | 813.0 | 470.0 | 152.4 | 305.0 |
| 18 | 450 | 452.2 | 686.0 | 286.0 | 343.0 | 457.0 | 203.0 | 914.0 | 686.0 | 1372.0 | 914.0 | 533.0 | 152.4 | 305.0 |
| 20 | 500 | 508.0 | 762.0 | 318.0 | 381.0 | 508.0 | 229.0 | 1016.0 | 762.0 | 1524.0 | 1016.0 | 584.0 | 152.4 | 305.0 |
| 22 | 550 | 559 | 838.0 | 343.0 | 419.0 | 559.0 | 254.0 | 1118.0 | 838.0 | 1676.0 | 1118.0 | 614.40 | 152.4 | 305.0 |
| 24 | 600 | 610 | 914 | 381.0 | 432.0 | 610.0 | 267.0 | 1219.0 | 914.0 | 1829.0 | 1219.0 | 692.0 | 152.4 | 305.0 |
| 26 | 650 | 660 | 991.0 | 406.0 | 495.0 | 660.0 | 267.0 | | | | | | | |
| 28 | 700 | 711 | 1067.0 | 438.0 | 521.0 | 771.0 | 267.0 | | | | | | | |
| 30 | 750 | 762 | 1143.0 | 470.0 | 589.0 | 762.0 | 267.0 | | | | | | | |
| 32 | 800 | 813 | 1219.0 | 502.0 | 597.0 | 813.0 | 267.0 | | | | | | | |
| 34 | 850 | 864 | 1295.0 | 533.0 | 635.0 | 864.0 | 267.0 | | | | | | | |
| 36 | 900 | 914 | 1372.0 | 565.0 | 673.0 | 914.0 | 267.0 | | | | | | | |
| 38 | 950 | 950.0 | 1448 | 600 | 711 | 965 | 305 | | | | | | | |
| 40 | 1000 | 1016.0 | 1524 | 632 | 749 | 1016 | 305 | | | | | | | |
| 42 | 1050 | 1067.0 | 1600 | 660 | 762 | 1067 | 305 | | | | | | | |
| 44 | 1100 | 1118.0 | 1676 | 695 | 813 | 1118 | 343 | | | | | | | |
| 46 | 1150 | 1168.0 | 1753 | 727 | 851 | 1168 | 343 | | | | | | | |
| 48 | 1200 | 1219.0 | 1829 | 759 | 889 | 1219 | 343 | | | | | | | |





MONEL HASTELLOY & INCOLOY CHEMICAL COMPOSITION

| Designation Comercial | C% | Co% | Cr% | Mo% | Ni% | V% | W% | Ai% | Cu% | Nb/Cb Ta% | Ti% | Fe% | Sonstige Autres-Other % |
|-----------------------|-------|------|-----------|-----------|-----------|------|---------|---------|-----------|------------|-----------|-----------|----------------------------------|
| Monel 400 | 0.12 | - | - | - | 65.0 | - | - | - | 32.0 | - | - | 1.5 | Mn 1.0 |
| Monel 401 | 0.10 | - | - | - | 43.0 | - | - | - | 53.0 | - | - | 0.75 | Si 0.25; Mn2.25 |
| Monel 404 | 0.15 | - | - | - | 52.0-57.0 | - | - | 0.05 | rest/bal | - | - | 0.50 | Mn 0.10; Si0.10; S o.024 |
| Monel 502 | 0.1 | - | - | - | 63.0-17.0 | - | - | 2.5-3.5 | rest/bal | - | 0.50 | 2.0 | Mn 1.5; Si0.5; S 0.010 |
| Monel K 500 | 0.13 | - | - | - | 64.0 | - | - | 2.8 | 30.0 | - | 0.6 | 1.0 | Mn 0.8 |
| Monel R 405 | 0.15 | - | - | - | 66.0 | - | - | - | 31.0 | - | - | 1.2 | Mn 1.0; S0.04 |
| Hastelloy B | 0.10 | 1.25 | 0.60 | 28.0 | rest/bal | 0.30 | - | - | - | - | - | 5.50 | Mn 0.80; Si0.70 |
| Hastelloy B2 | 0.02 | 1.0 | 1.0 | 26.0-30.0 | rest/bal | - | - | - | - | - | - | 2.0 | Mn 1.0; Si0.10 |
| Hastelloy C | 0.07 | 1.25 | 16.0 | 17.0 | rest/bal | 0.30 | 40 | - | - | - | - | 5.75 | Mn 1.0 ;Si 0.70 |
| Hastelloy C4 | 0.015 | 2.0 | 14.0-18.0 | 14.0-17.0 | rest/bal | - | - | - | - | - | 0.70 | 3.0 | Mn 1.0 ; Si0.08 |
| Hastelloy C 276 | 0.02 | 2.5 | 14.0-16.5 | 15.0-17.0 | rest/bal | 0.35 | 3.0-4.5 | - | - | - | - | 4.0-7.0 | Mn 1.0; Si0.05 |
| Hastelloy F | 0.02 | 1.25 | 22.0 | 6.5 | rest/bal | - | 0.50 | - | - | - | - | 21.0 | Mn 1.50; Si0.05 |
| Hastelloy G | 0.05 | 2.5 | 21.0-23.5 | 5.5-7.5 | rest/bal | - | 1.0 | - | 1.5-2.5 | Nb1.75-2.5 | - | 18.0-21.0 | Mn 1.0-2.0; p0.04; Si 1.0; B0.03 |
| Hastelloy G-2 | 0.03 | - | 23.0-26.0 | 5.0-7.0 | 47.0-52.0 | - | - | - | 0.70-1.20 | - | 0.70-1.50 | rest/bal | Mn 1.0; Si 1.0 |
| Hastelloy N | 0.06 | 0.25 | 7.0 | 16.5 | rest/bal | - | 0.20 | - | 0.10 | - | - | 3.0 | Mn 0.40; Si0.25; B0.01 |
| Hastelloy S | 0.02 | 2.0 | 15.5 | 14.5 | rest/bal | 0.6 | 1.0 | 0.20 | - | - | - | 3.0 | Mn 0.50; Si0.40; B0.0009; LA0.02 |
| Hastelloy W | 0.06 | 1.25 | 5.0 | 24.5 | rest/bal | - | - | - | - | - | - | 5.5 | Mn 0.050 ; Si0.50 |
| Hastelloy X | 0.10 | 1.50 | 22.0 | 9.0 | rest/bal | - | 0.60 | - | - | - | 18.5 | - | Mn 0.6; Si0.60 |
| Incoloy 800 | 0.04 | - | 21.0 | - | 32.0 | - | - | 0.3 | - | - | 0.4 | 45.0 | - |
| Incoloy 800 H | 0.08 | - | 21.0 | - | 32.0 | - | - | 0.3 | - | - | 0.4 | 45.0 | - |
| Incoloy 801 | 0.05 | - | 20.5 | - | 32.0 | - | - | - | - | - | 1.1 | 45.0 | - |
| Incoloy 802 | 0.35 | - | 21.0 | - | 32.0 | - | - | 0.6 | - | - | 0.7 | 45.0 | - |
| Incoloy 804 | 0.05 | - | 29.5 | - | 41.0 | - | - | 0.3 | - | - | 0.6 | 25.4 | - |
| Incoloy 805 | 0.12 | - | 7.5 | 0.50 | 36.0 | - | - | - | 0.10 | - | - | rest/bal | Mn 0.60; Si0.50 |
| Incoloy 810 | 0.25 | - | 21.0 | - | 32.0 | - | - | - | 0.50 | - | - | rest/bal | Mn 0.90; Si0.80 |
| Incoloy 825 | 0.04 | - | 21.0 | 3.0 | 42.0 | - | - | - | 2.0 | - | 1.0 | 30.0 | - |
| Incoloy 825 Cp | 0.04 | - | 21.5 | 3.0 | 42.0 | - | - | - | 2.2 | Nb0.9 | - | 30.0 | - |
| Incoloy 840 | 0.08 | - | 20.0 | - | 20.0 | - | - | - | - | - | - | rest/bal | Mn 1.0; Si 1.0 |
| Incoloy 901 | 0.05 | - | 12.5 | 6.0 | rest/bal | - | - | 0.15 | - | - | 2.70 | 34.0 | Mn 0.24; Si0.12; B0.015 |
| Incoloy 901 Mod | 0.05 | - | 12.5 | 5.80 | rest/bal | - | - | - | - | - | 2.9 | 34.0 | Mn 0.09; Si0.08; B0.015 |
| Incoloy 903 | 0.02 | 15.0 | - | - | 38.0 | - | - | 0.7 | - | Nb 3.0 | 1.4 | 41.0 | - |
| Incoloy 904 | 0.02 | 14.0 | - | - | 33.0 | - | - | - | - | - | 1.7 | 50.0 | - |
| Incoloy DS | 0.06 | - | 18.0 | - | 37.0 | - | - | - | - | - | - | 42.0 | Mn 1.0; Si2.3 |
| Incoloy Ma 956 | - | - | 20.0 | - | - | - | - | 4.5 | - | - | 0.5 | 74.4 | Y2.03 0.5 |
| Incoloy 600 | 0.05 | - | 15.5 | - | 75.0 | - | - | - | - | - | - | 8.0 | - |
| Incoloy 601 | 0.05 | - | 23.0 | - | 60.0 | - | - | 1.4 | - | - | - | 14.0 | - |
| Incoloy 604 | 0.04 | - | 15.8 | - | rest/bal | - | - | - | 0.10 | Nb 2.0 | - | 7.20 | Mn 0.20; Si0.20 |
| Incoloy 610 | 0.20 | - | 15.5 | - | rest/bal | - | - | - | 0.50 | Nb 1.0 | - | 9.0 | Mn 0.90; Si2.0 |
| Incoloy 617 | 0.07 | 12.5 | 22.5 | 9.0 | 54.0 | - | - | 1.0 | - | - | - | - | - |
| Incoloy 625 | 0.05 | - | 21.5 | 9.0 | 61.0 | - | - | 0.40 | - | Nb 3.65 | 0.40 | 2.5 | Mn 0.50; Si0.50 |
| Incoloy 671 | 0.05 | - | 48.0 | - | 51.0 | - | - | - | - | - | 0.35 | - | - |
| Incoloy 700 | 0.12 | 28.5 | 15.0 | 3.75 | 46.0 | - | - | 3.0 | 0.05 | - | 2.20 | 0.70 | Mn 0.10; Si0.30 |
| Incoloy 702 | 0.04 | - | 15.6 | - | rest/bal | - | - | 3.4 | 0.10 | - | 0.70 | 0.35 | Mn 0.05; Si0.20 |
| Incoloy 705 | 0.30 | - | 15.5 | - | rest/bal | - | - | - | 0.50 | - | - | 8.0 | Mn 0.90 ; Si5.5 |



S.S. Union B/V Valve



S.S. TC Diaphragm Valve



Butterfly Handle Ball Valve



C-Spanner



Welded Union



SMS Union



DIN Union



Side View Glass



Blind Nut



Side View Glass With Wiper



SMS Tee



S.S. TC NRV Valve



SMS Liner / Male Part



Sampling Valve



TC Sampling



Indian Spray Ball Fix



Spray Ball BSP



Spray Ball TC End



S.S. Weldeble NRV



S.S. TC Sight Glass



Flexible Hose Pipe



Three Way Valve



Flange Type Ball Valve



Gate Valve



Globe Valve



S.S. Sheet



S.S. Coil



Three PC Ball Valve



Y-Type Strainer



NRV Horizontal



NRV Vertical



Globe Valve



Disc Check Valve



Wafer Check Valve



Butterfly Valve



Application Industries



OIL & GAS INDUSTRIES



STEEL & POWER



ENGINEERING



CEMENT INDUSTRIES



SHIPBUILDING



FIRE FALLING SYSTEMS



REFINERY PLANT



FERTILIZER



CHEMICAL INDUSTRIES



PAPER & PULP MILLS



SUGAR INDUSTRIES

PHARMACY INDUSTRIES



PATEL METALS

INDUSTRIAL SUPPLIES

GET IN TOUCH

 **Mr. Mahendra Patel**

 +91 96255 79734 / +91 93512 64871

 patelmetals2025@gmail.com

 www.patelmetals.com

 **Head Office - Mumbai Hindalco Tube & Fittings**

 **First Branch - New Delhi - Shree Ram Metal Industries 16 Years**

 **Second Branch - New Delhi - Patel Metals**



Print by : Saikrupa Printer # 9714770163



 Scan QR For Website